

plexos

Lean Project Management

ONE TOOL TO INTEGRATE THEM ALL

Architecture, engineering, and Construction (AEC) industry presents inefficiencies to provide reliable estimations regarding time and budgeting due to several causes, but mainly to the industry segmentation and the poor collaboration between stakeholders. Several studies expose that projects typically take 20% longer to finish and are up to 80% over budget. Actually, this lack of productivity is faced in a disruptive transformation lead by BIM (Building Information Modeling) technologies and agile planning methodologies that allows to virtually build the asset in a collaborative environment, avoiding errors and reworks in construction site, with reliable estimations thanks to a collaborative workflow of information under the BIM concept

Plexos project® is a BIM construction management software developed to fulfill the construction industry needs, by the application of advanced and flexible scheduling tools under the collaborative BIM workflow platform BIMserver.center in IFC Format and Cost databases in cloud in FIEBDC format.

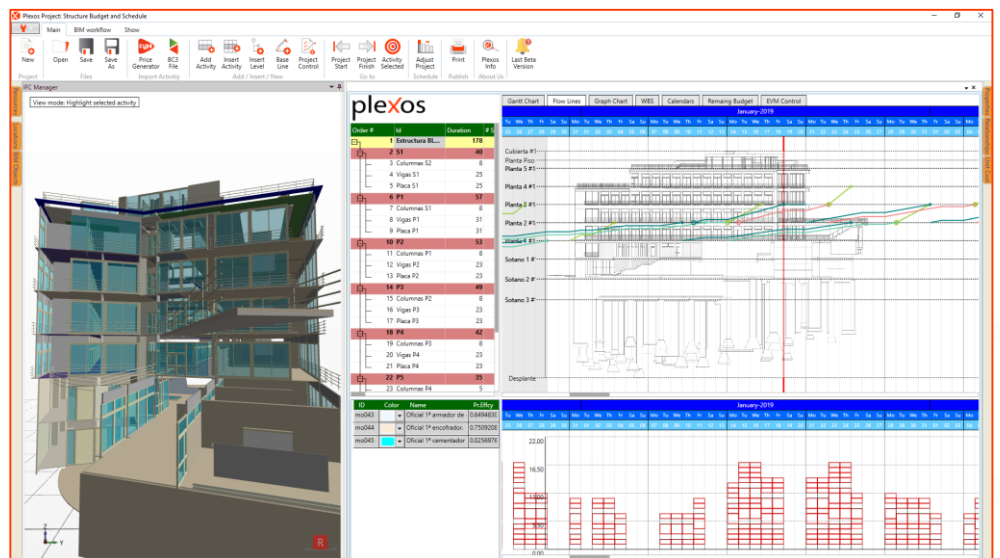


Plexos project® is a multiview software and friendly for users developed from academy to the AEC industry, that allows taking control of the project in all its dimensions and life cycle, trough cost and productivity control, efficiency indexes, and the most visual progress tools.

Costs

BIM IFC

Collaboration



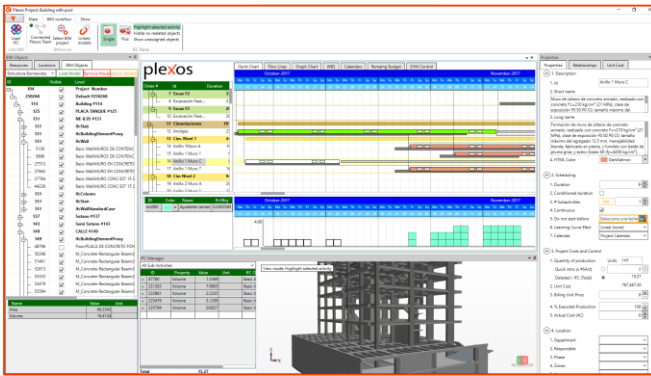
plexos

Lean Project Management

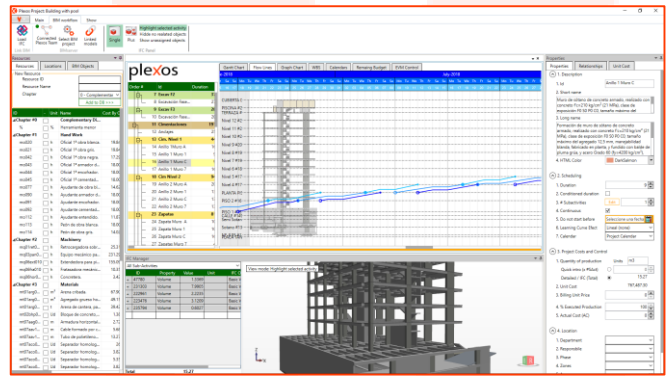
PROJECT SCHEDULING FEATURES

Plexos project® is designed for project planning and scheduling under Lean Construction and Last Planner System approaches, to provide feasible estimations with a friendly user experience.

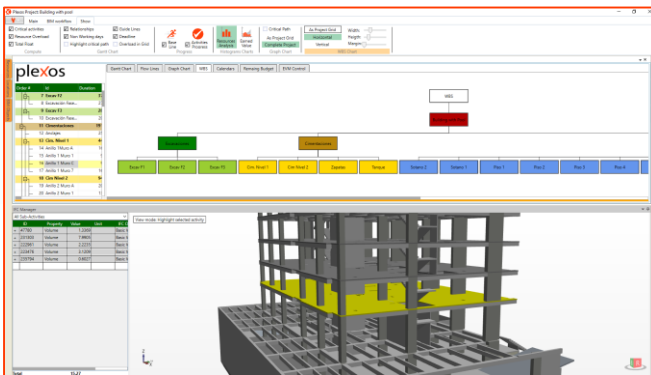
Gantt diagram with visual and intuitive information



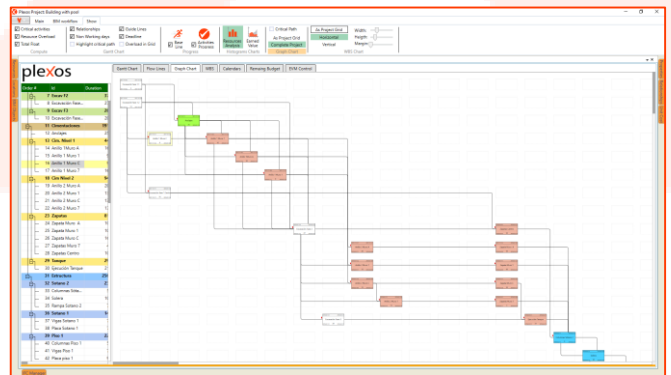
TAKT Scheduling (inline repetitive activities) and Project Flow lines



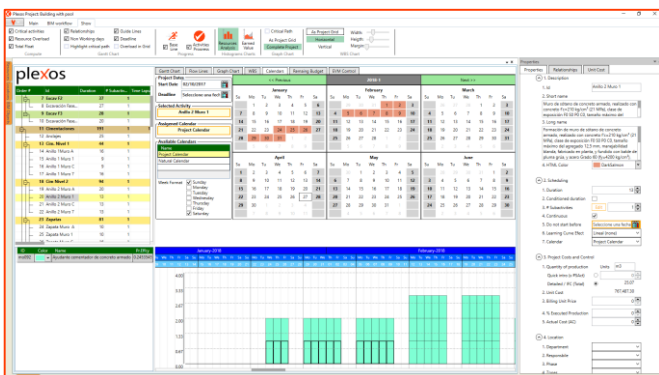
Automatic WBS (Work Breakdown Structure)



Automatic and intuitive Project graph diagram



Unlimited and friendly calendar management for activities and resources



Other scheduling features:

- All nature relationships between activities,
- Relationships based on production levels, effective work days and delays,
- Linear and nonlinear(applied learning) production schemes for activities,
- Optimal activity fragmentation,
- Discretional continuity between activities and sub-activities,
- Microsoft Project and Oracle Primavera compatibility.

plexos

Lean Project Management

BIM WORKFLOW FEATURES

Plexos project® works with BIMserver.center, as common data environment, to manage and store project shared information for a collaborative workflow with IFC files, compatible with the ISO/DIS 19650 stage 3 maturity level.

- Easy quantities extraction from models.
- Automatic levels detection and inclusion in the flow chart.
- Changes detection in federated model and automatic actualization of project budget.
- Assignment of several BIM Objects to activities or sub-activities.

The screenshot displays the Plexos project software interface, which is integrated with BIMserver.center. The interface is divided into several key components:

- Project Selection:** A window titled "Project selection" shows the user is connected to "Plexos Team" on BIMserver.center. It includes buttons for "Select project" and "Create new project".
- Projects List:** A "Projects" dialog box lists several projects with their creation dates:

Project	Created by	Date
plexosDev	Plexos Team	2018-10-02 03.23.35
Bloque C	Ingeco	2018-10-02 03.23.35
Proyecto Oficinas	BIMserver.center	2018-11-27 08.15.38
Centro de japon	Plexos Team	2018-11-22 17.40.00
Centro Cívico Universitario	Plexos Team	2018-11-22 17.40.58
- BIM Model View:** A 3D architectural model of a building is shown in a cutaway view, highlighting internal structural elements.
- Quantity Assing Objects:** A dialog box titled "Quantity Assing Objects" is open, showing a list of selected IFC objects and their quantities. The "Import" button is visible.
- Quantity Extraction:** A "Quantity Assing" dialog box is shown, allowing users to import objects as zero quantity or as units of quantity. It lists common quantities such as GrossArea, Perimeter, Area, Elevation at Bottom, Elevation at Top, Thickness, and Volume.
- Model Properties:** A "Properties" window is visible, showing various parameters for the selected object, including Name, Value, and Unit.

plexos

Lean Project Management

BUDGETS AND COST CONTROL FEATURES

Plexos project® is compatible with BC3 file format (FIBDC council) and with cost and prices databases in the cloud, allowing to easily compute the budget of the project and export it in a dynamic Excel worksheet.

With **Plexos project**® controlling the project with the Earned Value Method is easy and intuitive, allowing the use of several baselines and exporting the reports in Excel dynamic worksheets.

- Cost database files (BC3) compatibility for individual activities and whole budgets.
- Integration with online cost databases.
- Automatic budgets generation.
- Efficiency indexes of resource consumption at activity and project level.
- Control project by EVM (Earned Value Management) with unlimited baselines and controls.

The image displays a collage of screenshots from the Plexos software interface, illustrating various features and data outputs. The top-left screenshot shows a 3D model of a building structure, likely a bridge or industrial facility, with a sidebar of project settings. The top-right screenshot shows a detailed budget table with columns for activity, volume, unit price, and total cost. The middle-left screenshot shows a 'Budget Activity' dialog box with options for 'Over the selected activity' and 'At the end of the current job'. The middle-right screenshot shows a Gantt chart with a blue bar representing the project schedule. The bottom-left screenshot shows a detailed activity list with columns for activity name, volume, unit price, and total cost. The bottom-right screenshot shows a line graph with three data series (blue, red, and green) representing different budget metrics over time.